



Smart Wi-Fi Plug

With Energy Monitoring



HS110



Remote Access



Scheduling



Energy Monitoring



Away Mode

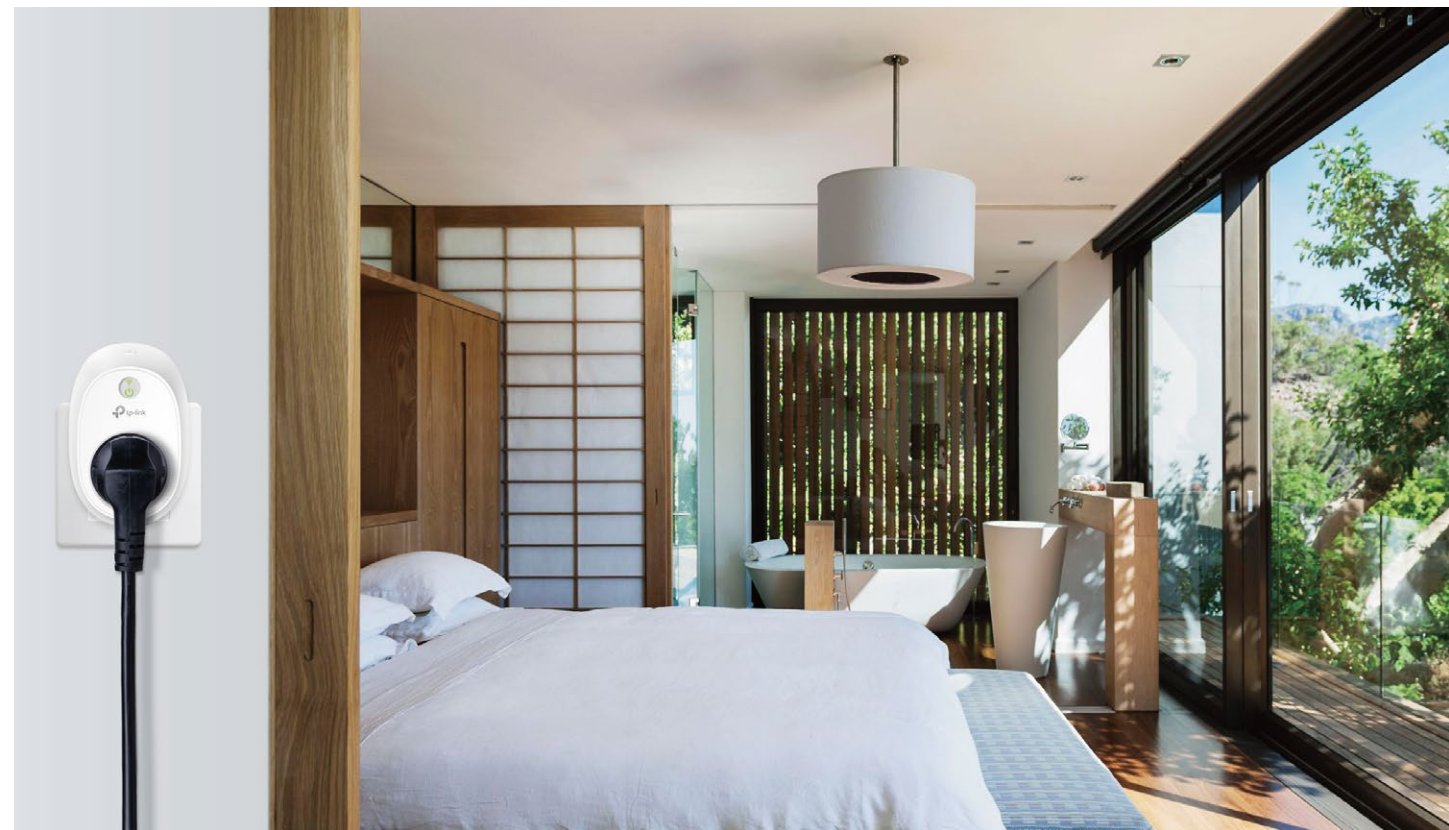


Kasa for Mobile

Highlights

Easily Manage Your Home Electronics Anytime, Anywhere

The Smart Plugs are easy to set up, and make it easier to manage your home electronics anywhere in the world with a tap of your smartphone. You can also schedule the Smart Plugs to automatically power electronics on and off as needed.



Control Your Devices with Voice Commands

Use Kasa Smart to pair TP-Link smart home products with Amazon Alexa, Google Assistant or SmartThings, giving you the ability to control your home with voice commands.



Features



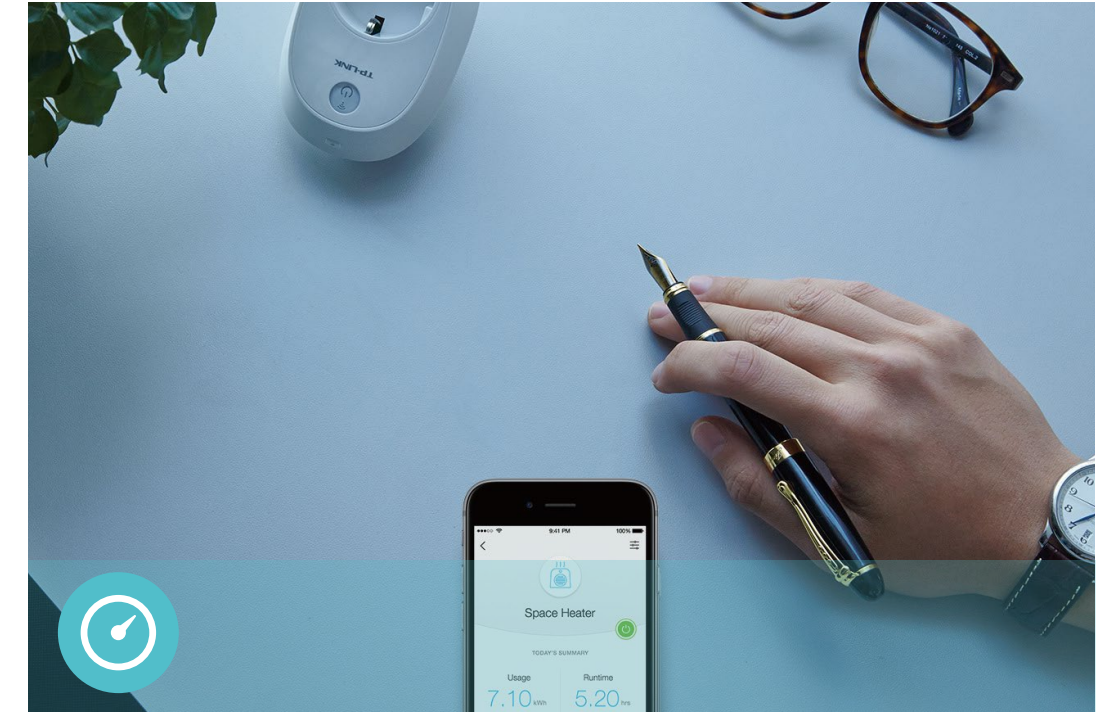
Ease of Use

- **Anywhere and Anytime** – Easy setup and control devices connected to the Smart Plugs anywhere with the free Kasa Smart app
- **Schedule and Timer** – Schedule the Smart Plugs to automatically power electronics on and off as needed, like setting lights to come on at dusk or turn off at sunrise
- **Smart Actions** – With Smart Actions, your Kasa devices can work together to create a smarter smart home
- **Grouping** – Use Grouping to combine your Kasa devices with other Kasa Smart devices for seamless control with one single tap on your smartphone



Compatibility

- **Works with Amazon Alexa or Google Assistant** – You can pair the Smart Plugs with Amazon Alexa, Google Assistant, or Samsung SmartThings for voice control
- **Compatible with Android, iOS** – The free Kasa app lets you run Smart Plugs from any Android (5.0 and higher) or iOS (iOS 10 and higher) devices
- **Works with SmartThings** – Control and manage your Kasa devices with SmartThings



Energy Conservation

- **Energy Monitoring** – You can efficiently conserve energy and save money while using the Smart Plugs to control your space heaters and fans. The Smart Plugs track your device's power consumption in real-time, and have weekly and monthly summaries.

Specifications

Working Status

- Input voltage: 100 - 240VAC
- Output voltage: 100 - 240VAC
- Maximum Load: 16A
- Maximum Power: $16A \times 230V = 3.68KW$

Network

- Protocol: IEEE 802.11 b/g/n
- Wireless Type: 2.4 GHz
- System Requirements: Android 5.0 or higher, iOS 10 or higher

General

- Package Contents:
 - Smart Wi-Fi Plug HS110
 - Quick Start Guide
- Certifications: CE, RoHS
- Material: PC
- Buttons: Power&Wi-Fi Button, Settings Button
- Operating Temperature: 0 °C ~ 40 °C (32°F ~ 104°F)
- Operating Humidity: 10%~90%RH, Non-condensing

Specifications are subject to change without notice. TP-Link is a registered trademark of TP-Link Technologies Co., Ltd. Other brands and product names are trademarks or registered trademarks of their respective holders. Copyright ©2018 TP-Link Technologies Co., Ltd. All rights reserved.
The Works with SmartThings words and logo are trademarks of Samsung Electronics Co. Ltd.

www.tp-link.com